

PREPARED BY:

# HBE

HANSEN BECKER ENGINEERING

777 SUNRISE HWY, SUITE 300

LYNBROOK, NY 11563

PHONE: (516) 561-5922

FAX: (516) 823-0219

EMAIL: HBEFILING@HBENG.US

WEB: WWW.HBENG.US

CLIENT:

AJUSTCO

99 MADISON AVENUE, SUITE 620

NEW YORK, NY 10016

PH: (646) 708-4422

SHEET NO.

1

OF

7

DESIGN BY

MG

DATE

3/20/24

CHECKED BY

MG

DATE

6/05/24

SCALE

AS SHOWN

ENGINEER SEAL:



PROJECT NO.:

23-377

ADDRESS:

DRAWING NO.:

GRAD 5 ZINC

DRAWING TITLE:

ANCHOR THREAD

AT-500-SB -6

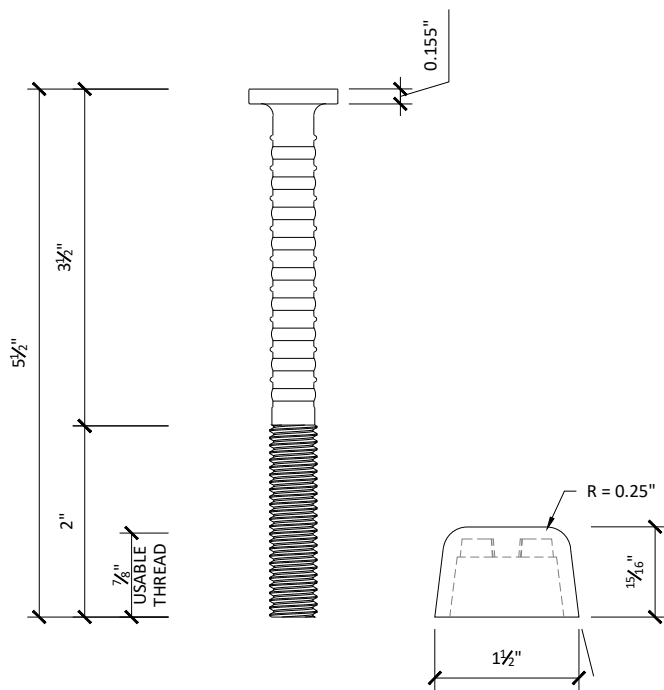
STRAIGHT BOLT

## ANCHOR THREAD STRAIGHT BOLT SPEC SHEET

### ZINC PLATED GRADE 5 STEEL

#### PRODUCT DESCRIPTION:

THE ANCHOR THREAD IS AN EMBEDDED ANCHOR POINT THAT IS INSTALLED INTO THE CONCRETE FORMWORK AND BURIED IN THE CONCRETE TO BECOME A PERMANENT PART OF THE SUPERSTRUCTURE.



#### SPECIFICATIONS

- ANCHOR BOLT MATERIAL: ZINC PLATED GRADE 5 STEEL
- THREAD SIZE: 1/2"-13 UNC RIGHT HAND TURN
- USABLE THREAD: 7/8"
- CAVITY DEPTH: 15/16"
- CAVITY BASE DIAMETER: 1 1/2"
- CAVITY TAPER: 14 DEGREES

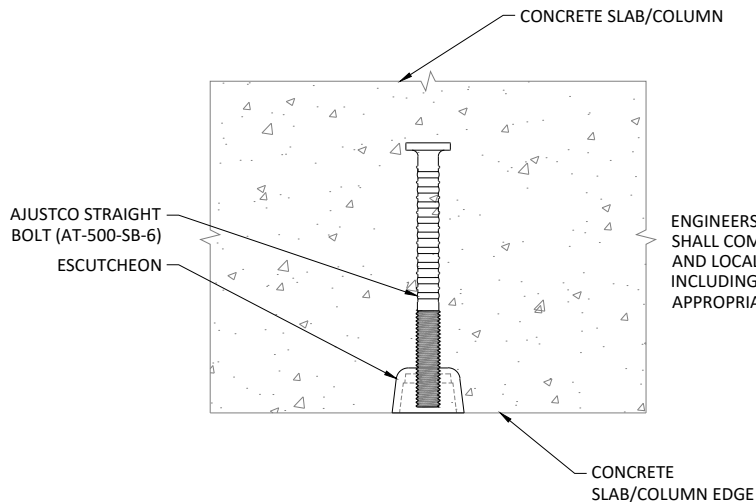
#### ANCHOR CAPACITY (ULTIMATE LOAD)

- TENSILE = 6,000 LBS
- SHEAR = 9,000 LBS

#### NOTES:

- ANCHOR CAPACITIES BASED ON 4,000 PSI NORMAL WEIGHT CONCRETE AND 6" MINIMUM EDGE DISTANCE.
- ENGINEERS USING THIS PRODUCT SHALL COMPLY WITH OSHA, ASCE, AND LOCAL SAFETY STANDARDS, INCLUDING APPLICATION OF APPROPRIATE SAFETY FACTORS.

### MATERIAL DIMENSIONS



ENGINEERS USING THIS PRODUCT SHALL COMPLY WITH OSHA, ASCE, AND LOCAL SAFETY STANDARDS INCLUDING APPLICATION OF APPROPRIATE SAFETY FACTORS.

### TYPICAL INSTALLATION

PREPARED BY:

# HBE

HANSEN BECKER ENGINEERING

777 SUNRISE HWY, SUITE 300

LYNBROOK, NY 11563

PHONE: (516) 561-5922

FAX: (516) 823-0219

EMAIL: HBEFILING@HBENG.US

WEB: WWW.HBENG.US

CLIENT:

AJUSTCO

99 MADISON AVENUE, SUITE 620

NEW YORK, NY 10016

PH: (646) 708-4422

SHEET NO.

2

OF

7

DESIGN BY

MG

DATE

3/20/24

CHECKED BY

MG

DATE

6/05/24

SCALE

AS SHOWN

ENGINEER SEAL:



PROJECT NO.:

23-377

ADDRESS:

DRAWING NO.:

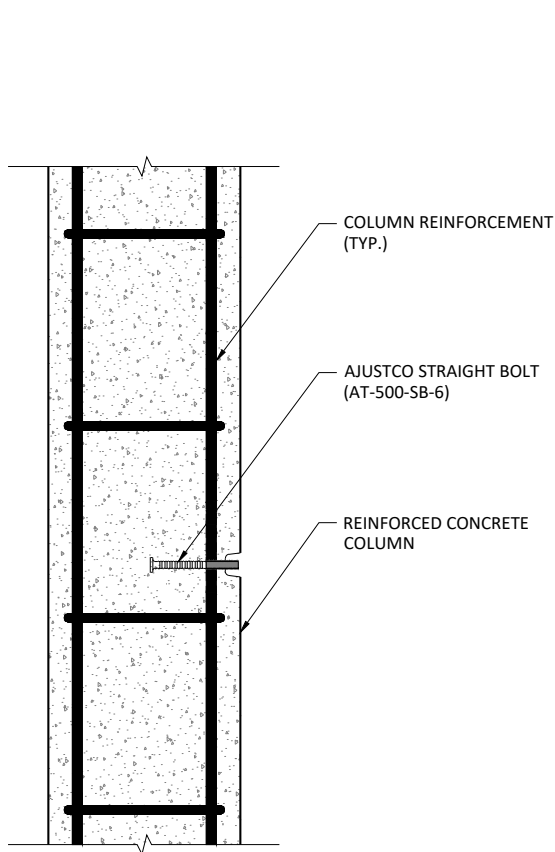
SK-01

DRAWING TITLE:

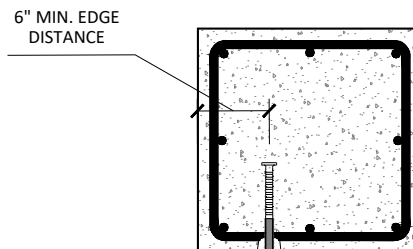
ANCHOR THREAD

AT-500-SB -6

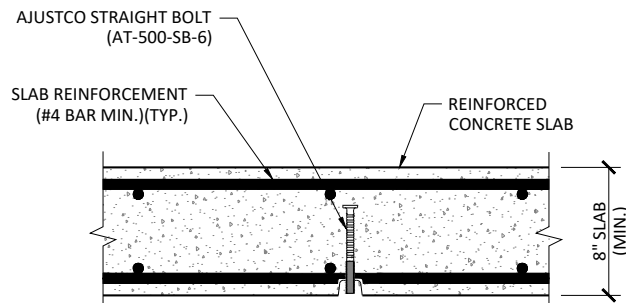
STRAIGHT BOLT



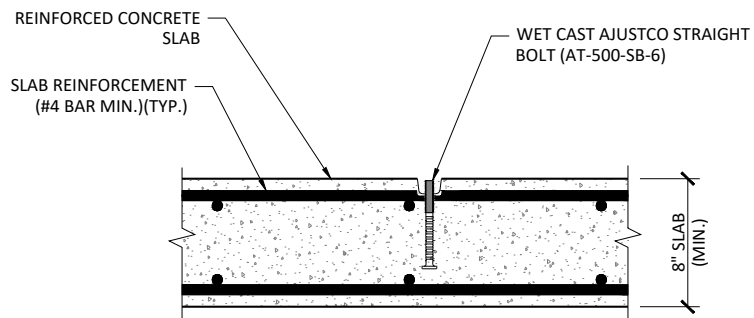
## CONCRETE COLUMN INSTALLATION



## RECTANGULAR COLUMN INSTALLATION



## UNDER SLAB INSTALLATION



## ABOVE SLAB INSTALLATION

### INSTALLATION INSTRUCTIONS:

1. IDENTIFY AND MARK ANCHOR THREAD STRAIGHT BOLT LOCATION.
2. INSTALL AJUSTCO STRAIGHT BOLT.
3. INSTALL ANCHOR THREAD PRIOR TO INSTALLING CONCRETE FORMWORK.
4. ANCHOR THREAD SHALL BE CAPPED AND SIT FLUSH WITH FACE OF CONCRETE COLUMN/WALL.
5. STRAIGHT BOLT SHALL BE INSPECTED PRIOR TO PLACING CONCRETE.
6. ENSURE THE ANCHOR THREAD IS SECURED IN PLACE PRIOR TO PLACING CONCRETE.
7. CONCRETE SHALL ACHIEVE AT LEAST 4,000 PSI (MIN.) STRENGTH PRIOR TO USING THE ANCHOR THREAD.
8. ABANDON ANCHOR THREAD WHEN NO LONGER IN USE.

### INSPECTION RECOMMENDATIONS:

1. STRAIGHT BOLT EXPOSED THREADED ROD SHALL BE INSPECTED BEFORE EACH USE FOR ANY DAMAGE.
2. DO NOT USE IF THERE ARE SIGNS OF DAMAGE AND/OR TAMPERING.
3. INSPECT ANCHORS FOR DAMAGE AT LEAST ONCE A WEEK AND AFTER ANY OCCURRENCE WHICH COULD AFFECT THE INTEGRITY OF THE SYSTEM.

PREPARED BY:

# HBE

HANSEN BECKER ENGINEERING

777 SUNRISE HWY, SUITE 300

LYNBROOK, NY 11563

PHONE: (516) 561-5922

FAX: (516) 823-0219

EMAIL: HBEMAILING@HBENG.US

WEB: WWW.HBENG.US

CLIENT:

AJUSTCO

99 MADISON AVENUE, SUITE 620

NEW YORK, NY 10016

PH: (646) 708-4422

SHEET NO.

3

OF

7

DESIGN BY

MG

DATE

3/20/24

CHECKED BY

MG

DATE

6/05/24

SCALE

AS SHOWN

ENGINEER SEAL:



PROJECT NO.:

23-377

ADDRESS:

DRAWING NO.:

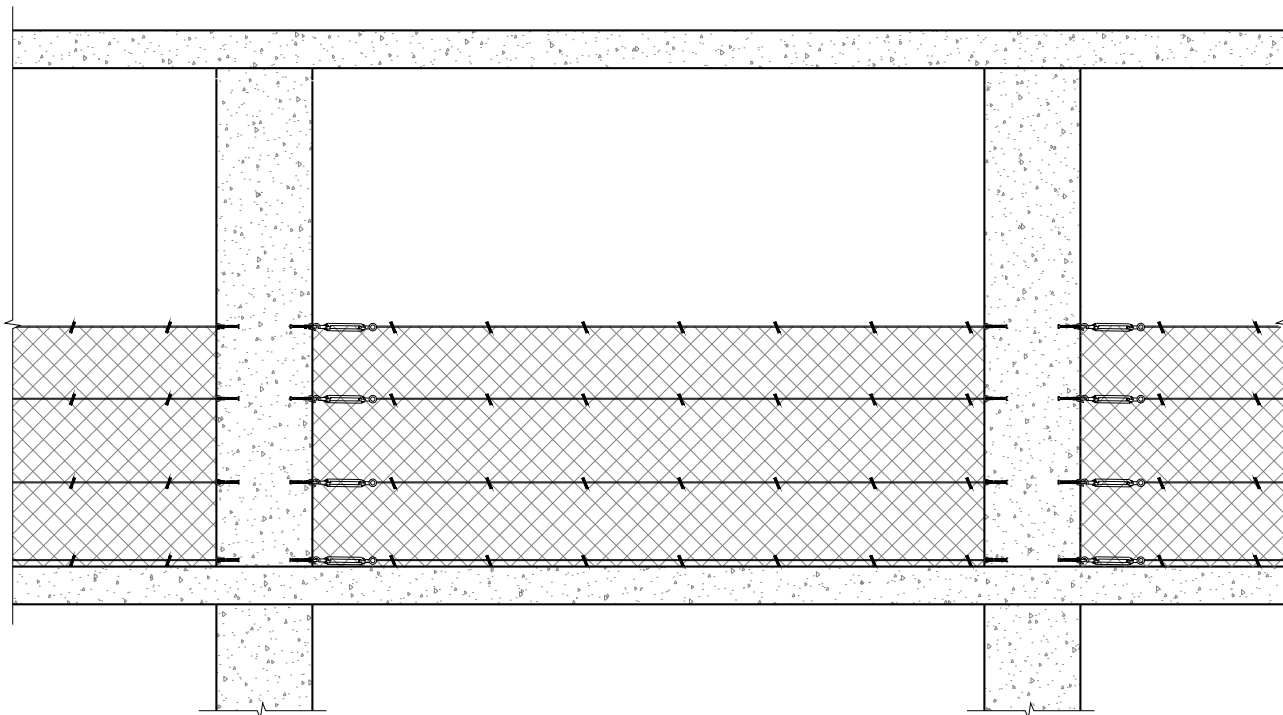
SK-02

DRAWING TITLE:

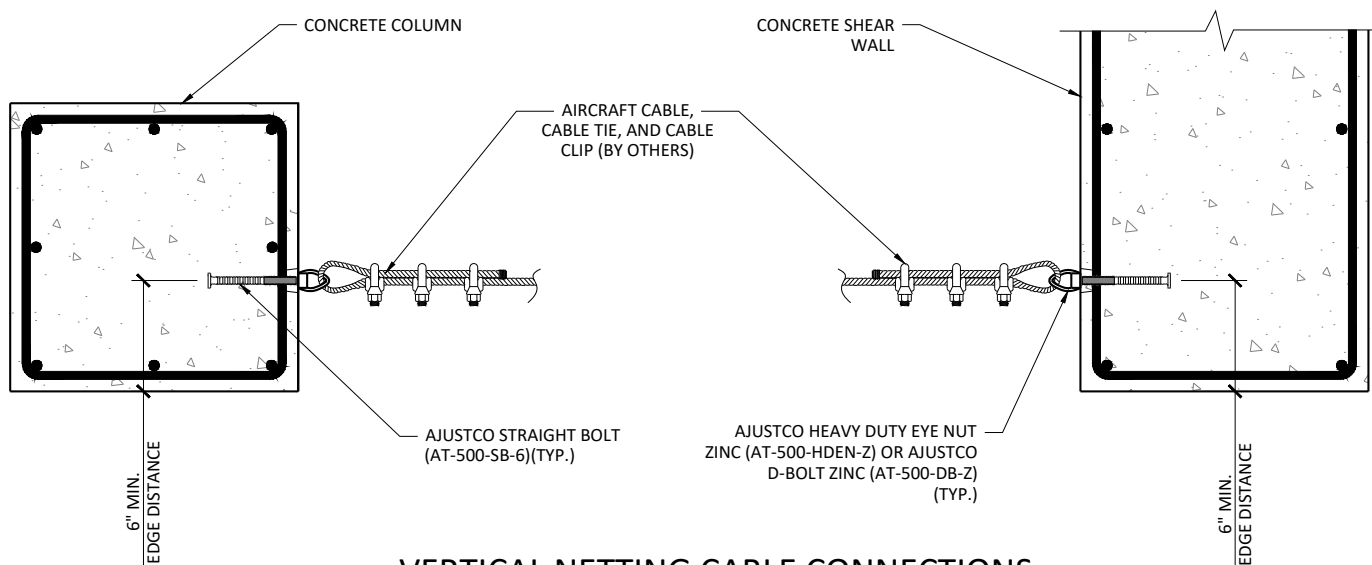
ANCHOR THREAD

AT-500-SB -6

STRAIGHT BOLT



TYPICAL VERTICAL NETTING ELEVATION



## VERTICAL NETTING CABLE CONNECTIONS

### NOTES:

1. CONTRACTOR SHALL FOLLOW AJUSTCO INSTALLATION MANUAL WHEN INSTALLING THE STRAIGHT BOLT (AT-500-SB-6).
2. CONCRETE SHALL REACH 28-DAY STRENGTH PRIOR TO USE.
3. NETTING AND COMPONENTS BY OTHERS.
4. CONNECTION TO BOTH COLUMNS AND SHEAR WALLS ARE ACCEPTABLE.
5. BUILDING ENGINEER SHALL VERIFY BUILDING STRUCTURE CAN SUPPORT LOADS IMPOSED BY AJUSTCO ANCHOR.

PREPARED BY:

# HBE

HANSEN BECKER ENGINEERING

777 SUNRISE HWY, SUITE 300  
LYNBROOK, NY 11563  
PHONE: (516) 561-5922  
FAX: (516) 823-0219  
EMAIL: HBEFILING@HBENG.US  
WEB: WWW.HBENG.US

CLIENT:

AJUSTCO  
99 MADISON AVENUE, SUITE 620  
NEW YORK, NY 10016  
PH: (646) 708-4422

SHEET NO.

4 OF 7  
DESIGN BY MG DATE 3/20/24  
CHECKED BY MG DATE 6/05/24  
SCALE AS SHOWN

ENGINEER SEAL:



PROJECT NO.:

23-377

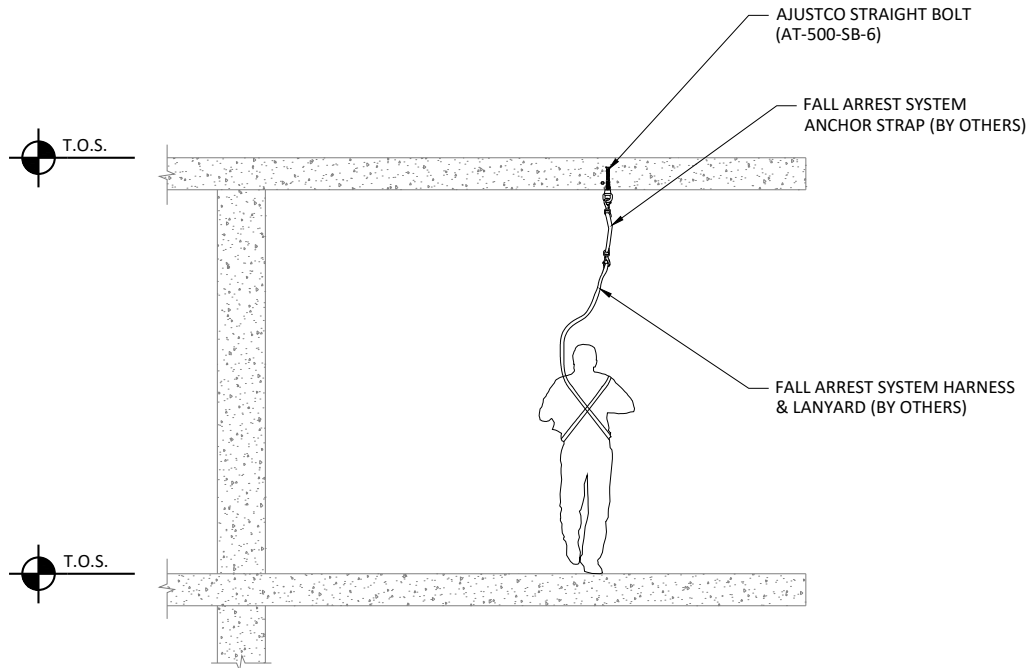
ADDRESS:

DRAWING NO.:

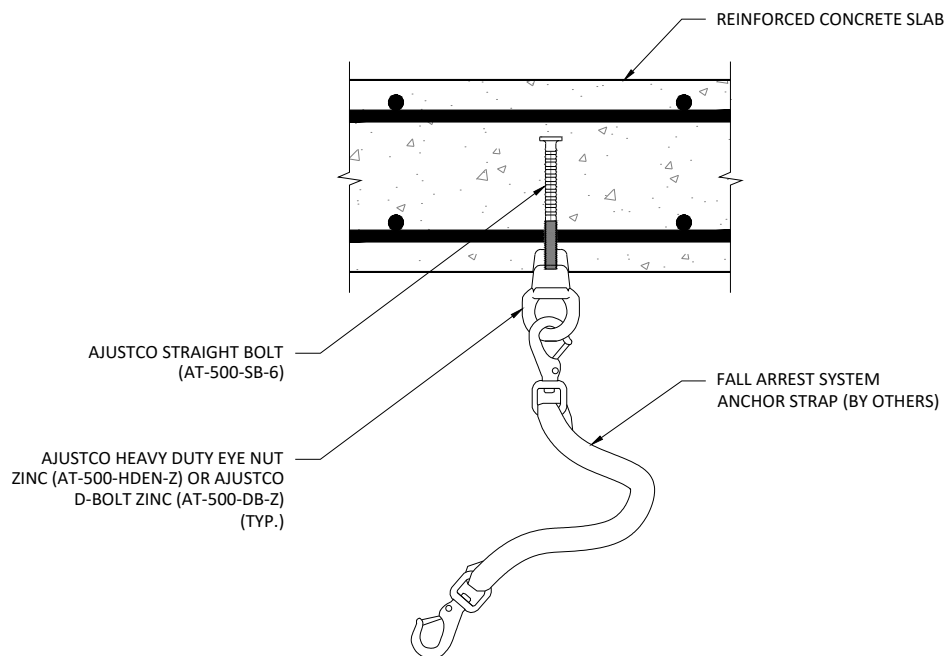
SK-03

DRAWING TITLE:

ANCHOR THREAD  
AT-500-SB -6  
STRAIGHT BOLT



TYPICAL FALL ARREST SYSTEM ANCHOR ELEVATION



FALL ARREST SYSTEM ANCHOR STRAP CONNECTION

NOTES:

1. CONTRACTOR SHALL FOLLOW AJUSTCO INSTALLATION MANUAL WHEN INSTALLING ANCHOR THREAD.
2. BUILDING ENGINEER SHALL VERIFY BUILDING STRUCTURE CAN SUPPORT LOADS IMPOSED BY AJUSTCO ANCHOR.

PREPARED BY:

# HBE

HANSEN BECKER ENGINEERING

777 SUNRISE HWY, SUITE 300

LYNBROOK, NY 11563

PHONE: (516) 561-5922

FAX: (516) 823-0219

EMAIL: HBEFILING@HBENG.US

WEB: WWW.HBENG.US

CLIENT:

AJUSTCO

99 MADISON AVENUE, SUITE 620

NEW YORK, NY 10016

PH: (646) 708-4422

SHEET NO.

5

OF

7

DESIGN BY

MG

DATE

3/20/24

CHECKED BY

MG

DATE

6/05/24

SCALE

AS SHOWN

ENGINEER SEAL:



PROJECT NO.:

23-377

ADDRESS:

DRAWING NO.:

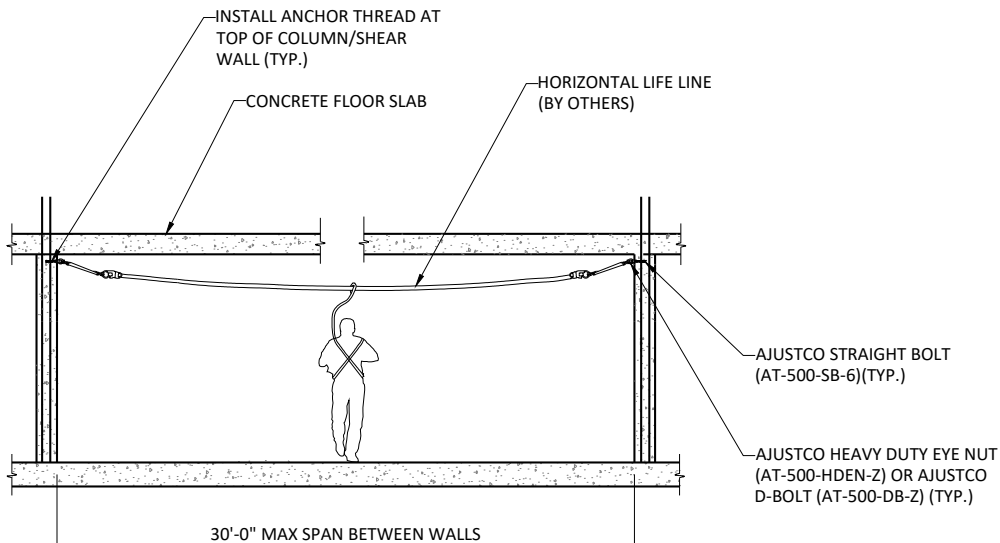
SK-04

DRAWING TITLE:

ANCHOR THREAD

AT-500-SB -6

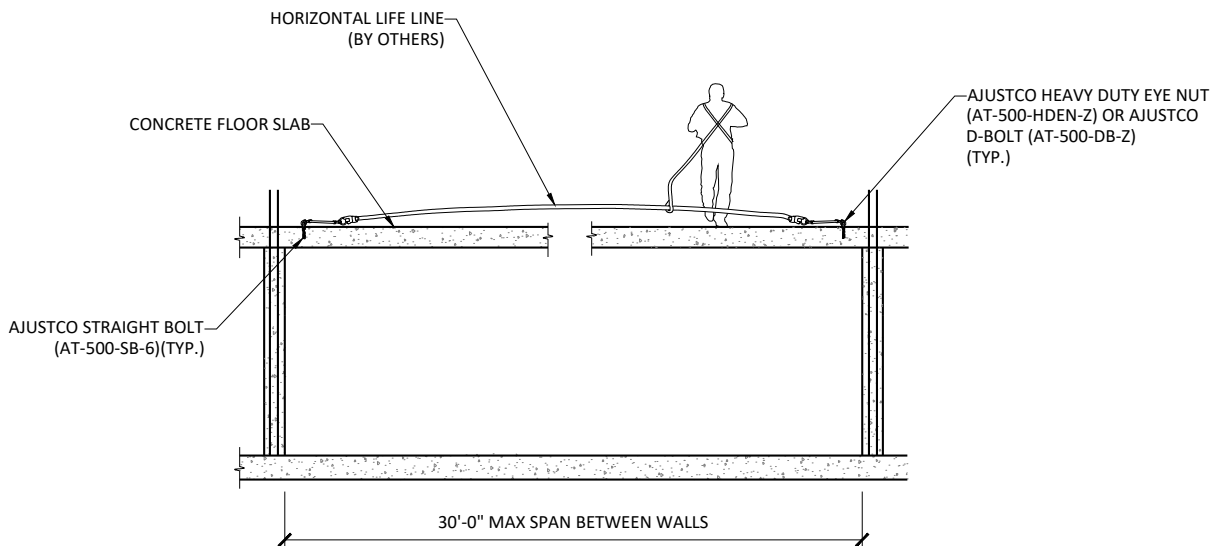
STRAIGHT BOLT



## ANCHOR THREAD LIFELINE DETAIL I

### NOTES:

1. CONTRACTOR SHALL FOLLOW AJUSTCO INSTALLATION MANUAL WHEN INSTALLING AT-500-SB-6 STRAIGHT BOLT.
2. VERIFY ANCHOR THREAD AND AJUSTCO HEAVY DUTY EYE NUT AT EACH END OF THE HORIZONTAL LIFELINE ARE INSTALLED AS REQUIRED.
3. WALL CONCRETE MUST HAVE ATTAINED A COMPRESSIVE STRENGTH OF 3000 PSI MINIMUM BEFORE ANCHOR THREAD IS USED.
4. HORIZONTAL LIFE LINE AND RELATED ATTACHMENTS/EQUIPMENT (BY OTHERS).
5. BUILDING ENGINEER SHALL VERIFY BUILDING STRUCTURE CAN SUPPORT LOADS IMPOSED BY AJUSTCO ANCHOR.



## ANCHOR THREAD LIFELINE DETAIL II

### NOTE:

1. SEE DETAIL ABOVE FOR NOTES.

PREPARED BY:

# HBE

HANSEN BECKER ENGINEERING

777 SUNRISE HWY, SUITE 300  
LYNBROOK, NY 11563  
PHONE: (516) 561-5922  
FAX: (516) 823-0219  
EMAIL: HBEFILING@HBENG.US  
WEB: WWW.HBENG.US

CLIENT:

AJUSTCO  
99 MADISON AVENUE, SUITE 620  
NEW YORK, NY 10016  
PH: (646) 708-4422

SHEET NO.

6

OF

7

DESIGN BY

MG

DATE

3/20/24

CHECKED BY

MG

DATE

6/05/24

SCALE

AS SHOWN

ENGINEER SEAL:



PROJECT NO.:

23-377

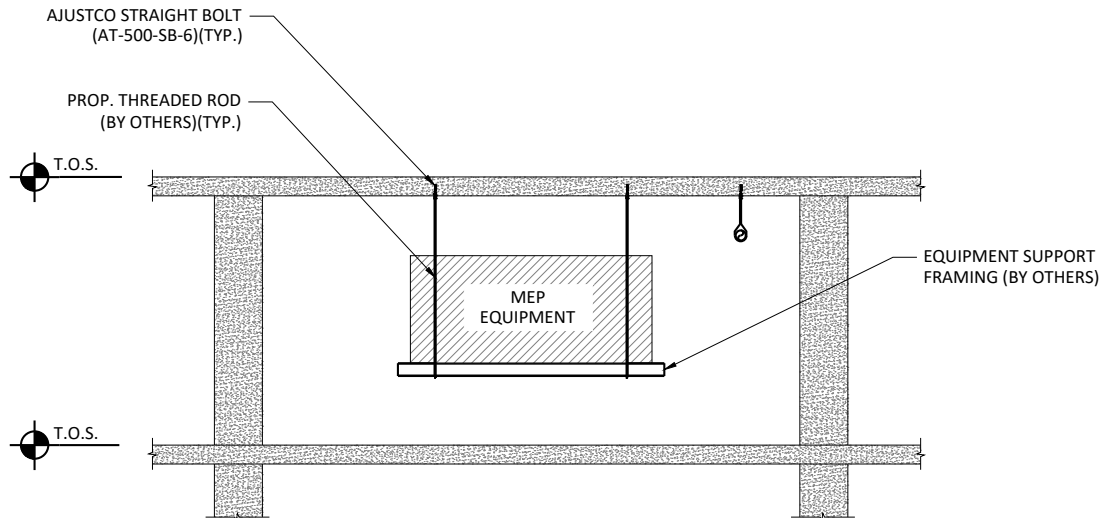
ADDRESS:

DRAWING NO.:

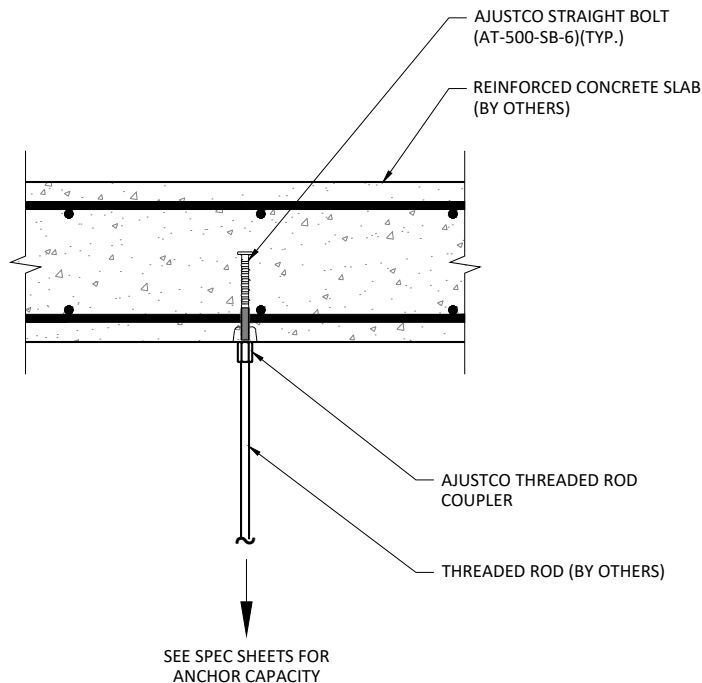
SK-05

DRAWING TITLE:

ANCHOR THREAD  
AT-500-SB -6  
STRAIGHT BOLT



**TYPICAL SUSPENDED EQUIPMENT SUPPORT ELEVATION**



## ANCHOR THREAD CONNECTION DETAIL

### NOTES:

1. CONTRACTOR SHALL FOLLOW AJUSTCO INSTALLATION MANUAL WHEN INSTALLING THE AT-500-SB-6 STRAIGHT BOLT.
2. CONCRETE SHALL REACH 28-DAY STRENGTH PRIOR TO USE.
3. BUILDING ENGINEER SHALL VERIFY BUILDING STRUCTURE CAN SUPPORT LOADS IMPOSED BY AJUSTCO ANCHOR.

PREPARED BY:

# HBE

HANSEN BECKER ENGINEERING

777 SUNRISE HWY, SUITE 300  
LYNBROOK, NY 11563  
PHONE: (516) 561-5922  
FAX: (516) 823-0219  
EMAIL: HBEFILING@HBENG.US  
WEB: WWW.HBENG.US

CLIENT:

AJUSTCO  
99 MADISON AVENUE, SUITE 620  
NEW YORK, NY 10016  
PH: (646) 708-4422

SHEET NO.

7

OF

7

DESIGN BY

MG

DATE

3/20/24

CHECKED BY

MG

DATE

6/05/24

SCALE

AS SHOWN

ENGINEER SEAL:



PROJECT NO.:

23-377

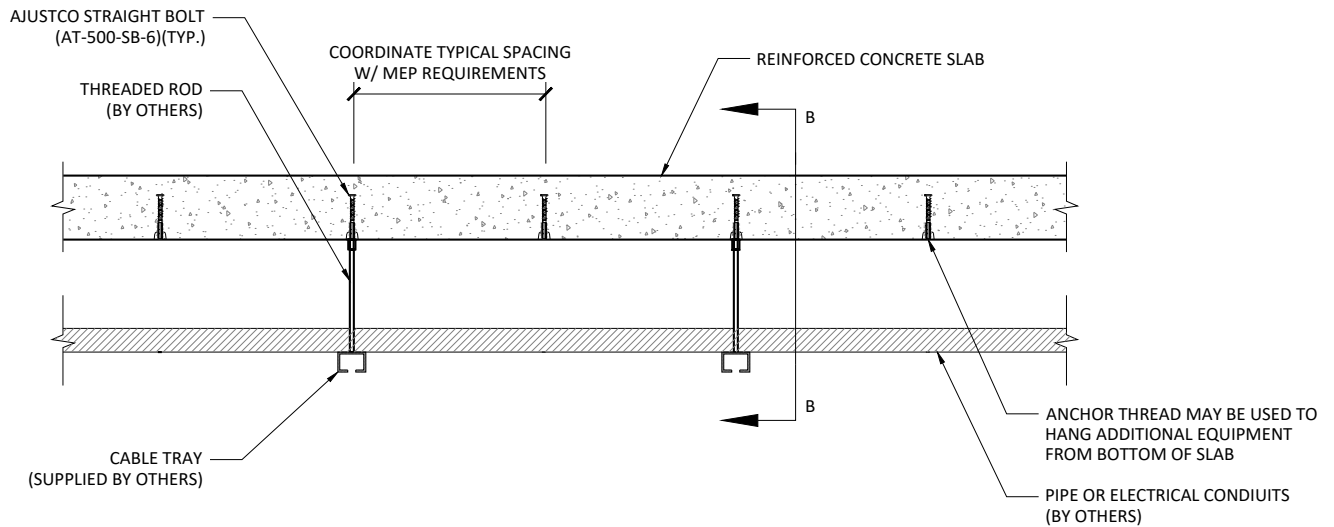
ADDRESS:

DRAWING NO.:

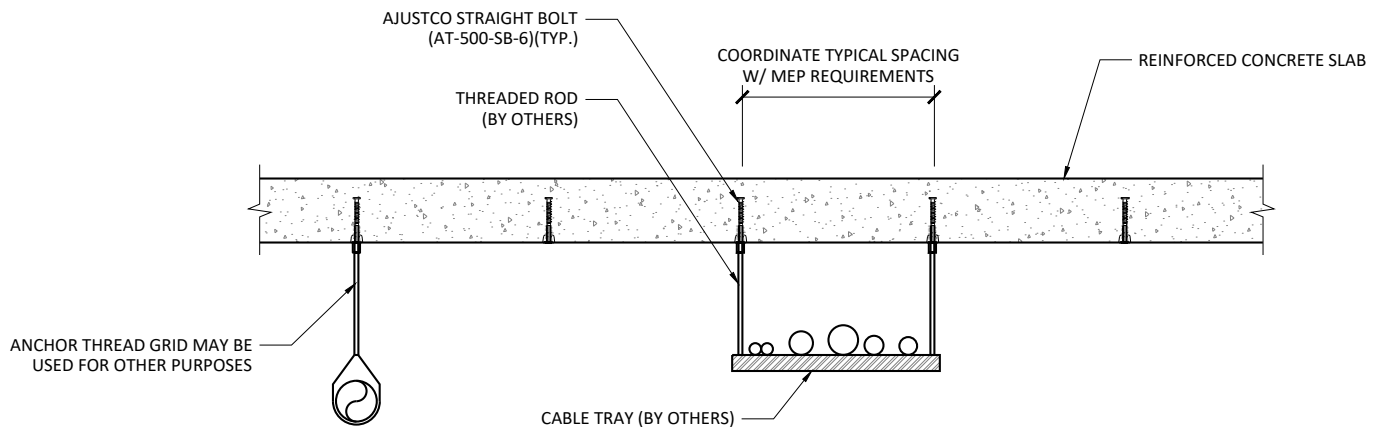
SK-06

DRAWING TITLE:

ANCHOR THREAD  
AT-500-SB -6  
STRAIGHT BOLT



## TYP. ANCHOR THREAD GRID LAYOUT SECTION I



## TYP. ANCHOR THREAD GRID LAYOUT SECTION II

NOTE:

1. BUILDING ENGINEER SHALL VERIFY BUILDING STRUCTURE CAN SUPPORT LOADS IMPOSED BY AJUSTCO AT-500-SB-6 STRAIGHT BOLT.